

First 10

All Children Learn and Thrive



Allison Shelley for EDUimages

The first 10 years of a child's life are a critical developmental period that impacts all that follows. Yet the disjointed patchwork of early childhood and early elementary programs in the U.S. leaves children vulnerable and at risk. Opportunity and achievement gaps begin early for children who live in families with low or below poverty-level incomes. Across the country, EDC's First 10 initiative is supporting school-community partnerships in improving outcomes for thousands of children.

Community Partnerships Drive Change

Inspired by innovative communities, First 10 engages elementary schools, districts, early childhood programs, and community agencies in building systems of support for children and families. EDC helps these partnerships develop and carry out plans focused on the strategies shown in the First 10 theory of action below: **Collaborate to Improve Teaching and Learning, Coordinate Comprehensive Services, and Partner with Families.**

Typical First 10 practices include coordinating the transition to kindergarten, conducting joint pre-K and kindergarten professional development, coordinating connections to health and social services, improving the quality of early childhood programs, providing play and learn groups linked to elementary schools, and strengthening early grades curriculum and instruction.

Support for Partnerships

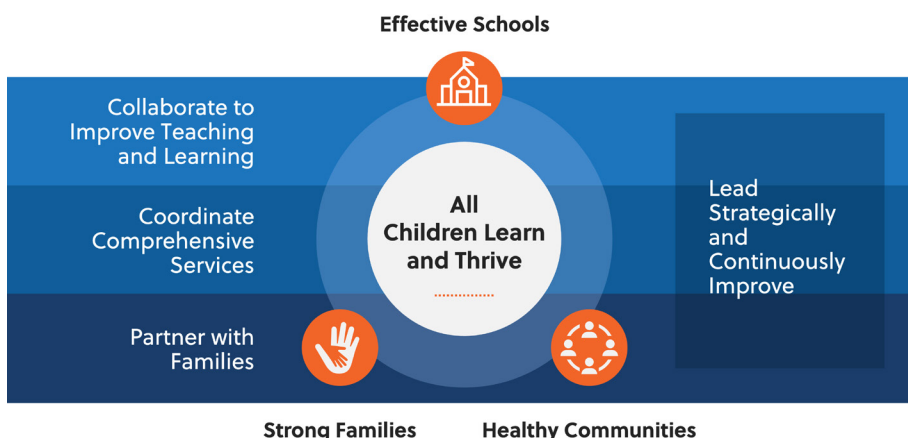
EDC's supports for First 10 partnerships include:

- ▶ Assessing communities' assets, needs, and work currently underway
- ▶ Partnering with communities to design plans to apply and sustain the three First 10 strategies
- ▶ Building community capacity to **Lead Strategically** and **Continuously Improve**
- ▶ Supporting a network of sites to facilitate peer learning
- ▶ Developing and sharing practical guidance to support communities in using the First 10 model



This program is going to help an enormous number of students be prepared to learn."

Dr. Andrea Berry
Superintendent of Schools
School District of the City of York,
Pennsylvania



Findings on First 10's Impact

An [evaluation conducted by the American Institutes of Research](#) found that among other positive outcomes, First 10 pilot sites:

- Addressed barriers that limit families' access to school readiness services.
- Increased collaboration between Pre-K and Kindergarten teachers.
- Aligned Pre-K and Kindergarten practices.
- Raised awareness of the importance of early learning through Parenting Campaigns.
- Improved collaboration among schools, early childhood programs, and community partners

First 10 in Action



Read About First 10

- [Early Learning Nation](#)
- [Rhode Island Evaluation](#)
- [Education Week](#)
- [Case Study: The East Providence First 10 Partnership](#)

CONTACT US

To learn more about First 10, contact:

David Jacobson, Director, First 10, djacobson@edc.org, (617) 618-2662



FUNDERS AND PARTNERS

- Alabama Department of Early Childhood Education
- Cambridge Public Schools
- Claude Moore Charitable Foundation
- Greater Worcester Community Foundation
- Heising-Simons Foundation
- Lancaster County Community Action Partnership
- Maine Department of Education
- Michigan Department of Education
- Pennsylvania Early Learning Resource Centers 9 and 10
- Rhode Island Department of Education
- School District of the City of York
- W.K. Kellogg Foundation

Education Development Center (EDC) is a global nonprofit that advances lasting solutions to improve education, promote health, and expand economic opportunity. Since 1958, we have been a leader in designing, implementing, and evaluating powerful and innovative programs in more than 80 countries around the world.



edc.org

- twitter.com/edctweets
- facebook.com/edc.worldwide
- go.edc.org/linkedin



First10.org