

First 10

All Children Learn and Thrive



EDC/Burt Granofsky

The first 10 years of a child's life are a critical development time that impacts all that follows. To make sure all children get off to a great start, EDC's First 10 initiative supports school-community partnerships in working together to dramatically improve children's well-being, school readiness, and school success. Across the U.S., our team provides First 10 sites with the guidance and tools they need to ensure all children thrive.

Community Partnerships Drive Change

Inspired by innovative communities, First 10 engages elementary schools, districts, early childhood programs, and community agencies in building systems of support for children and families. EDC helps these partnerships develop and carry out plans focused on the strategies shown in the First 10 theory of action below: **Collaborate to Improve Teaching and Learning**, **Coordinate Comprehensive Services**, and **Partner with Families**.

Typical First 10 practices include coordinating the transition to kindergarten, conducting joint pre-K and kindergarten professional development, coordinating connections to health and social services, improving the quality of early childhood programs, providing play and learn groups linked to elementary schools, and strengthening early grades curriculum and instruction.

Support for Partnerships

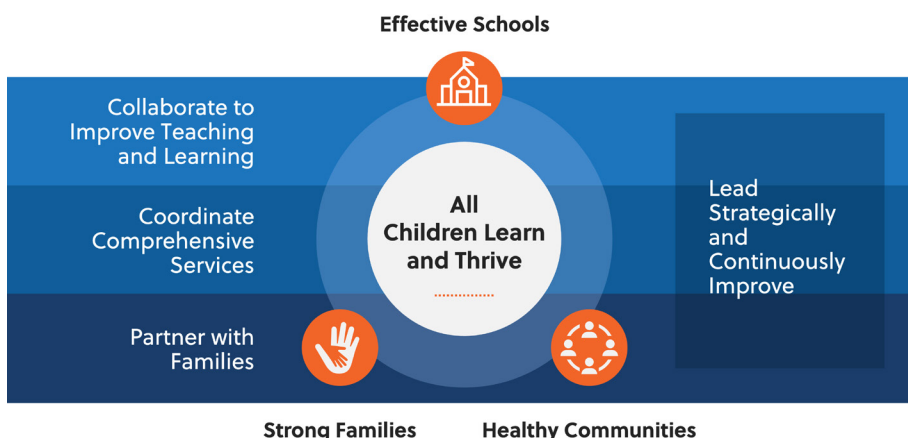
EDC's supports for First 10 partnerships include:

- Assessing communities' assets, needs, and work currently underway
- Partnering with communities to design plans to apply and sustain the three First 10 strategies
- Building community capacity to **Lead Strategically** and **Continuously Improve**
- Supporting a network of sites to facilitate peer learning
- Developing and sharing practical guidance to support communities in using the First 10 model



This program is going to help an enormous number of students be prepared to learn."

Dr. Andrea Berry
Superintendent of Schools
School District of the City of York,
Pennsylvania



Effective Schools

Collaborate to Improve Teaching and Learning

Coordinate Comprehensive Services

Partner with Families

All Children Learn and Thrive

Lead Strategically and Continuously Improve

Strong Families

Healthy Communities

Findings on First 10's Impact

An [evaluation conducted by the American Institutes of Research](#) found that among other positive outcomes, First 10 pilot sites:

- Addressed barriers that limit families' access to school readiness services.
- Increased collaboration between Pre-K and Kindergarten teachers.
- Aligned Pre-K and Kindergarten practices.
- Raised awareness of the importance of early learning through Parenting Campaigns.
- Improved collaboration among schools, early childhood programs, and community partners

First 10 in Action



Read About First 10

- [K-12 Dive](#)
- [Early Learning Nation](#)
- [Rhode Island Evaluation](#)
- [Education Week](#)
- [Case Study: The East Providence First 10 Partnership](#)

CONTACT US

To learn more about First 10, contact:

David Jacobson, Director, First 10, djacobson@edc.org, (617) 618-2662

PURPOSE

For more than 65 years, EDC has worked with partners worldwide to advance every person's journey to [learn](#), [work](#), and [be well](#).



FUNDERS AND PARTNERS

- Alabama Department of Early Childhood Education
- Cambridge Public Schools
- Claude Moore Charitable Foundation
- Greater Worcester Community Foundation
- Heising-Simons Foundation
- Lancaster County Community Action Partnership
- Maine Department of Education
- Michigan Department of Education
- Pennsylvania Early Learning Resource Centers 9 and 10
- Rhode Island Department of Education
- School District of the City of York
- W.K. Kellogg Foundation



Education Development Center
contact@edc.org

Boston | Chicago | New York | Washington, D.C.

CONNECT WITH US

- [in go.edc.org/linkedin](https://www.linkedin.com/company/go.edc.org/)
- [X go.edc.org/twitter](https://twitter.com/go.edc.org/)
- [f go.edc.org/facebook](https://www.facebook.com/go.edc.org/)
- [@ go.edc.org/instagram](https://www.instagram.com/go.edc.org/)



[First10.org](https://www.First10.org)